



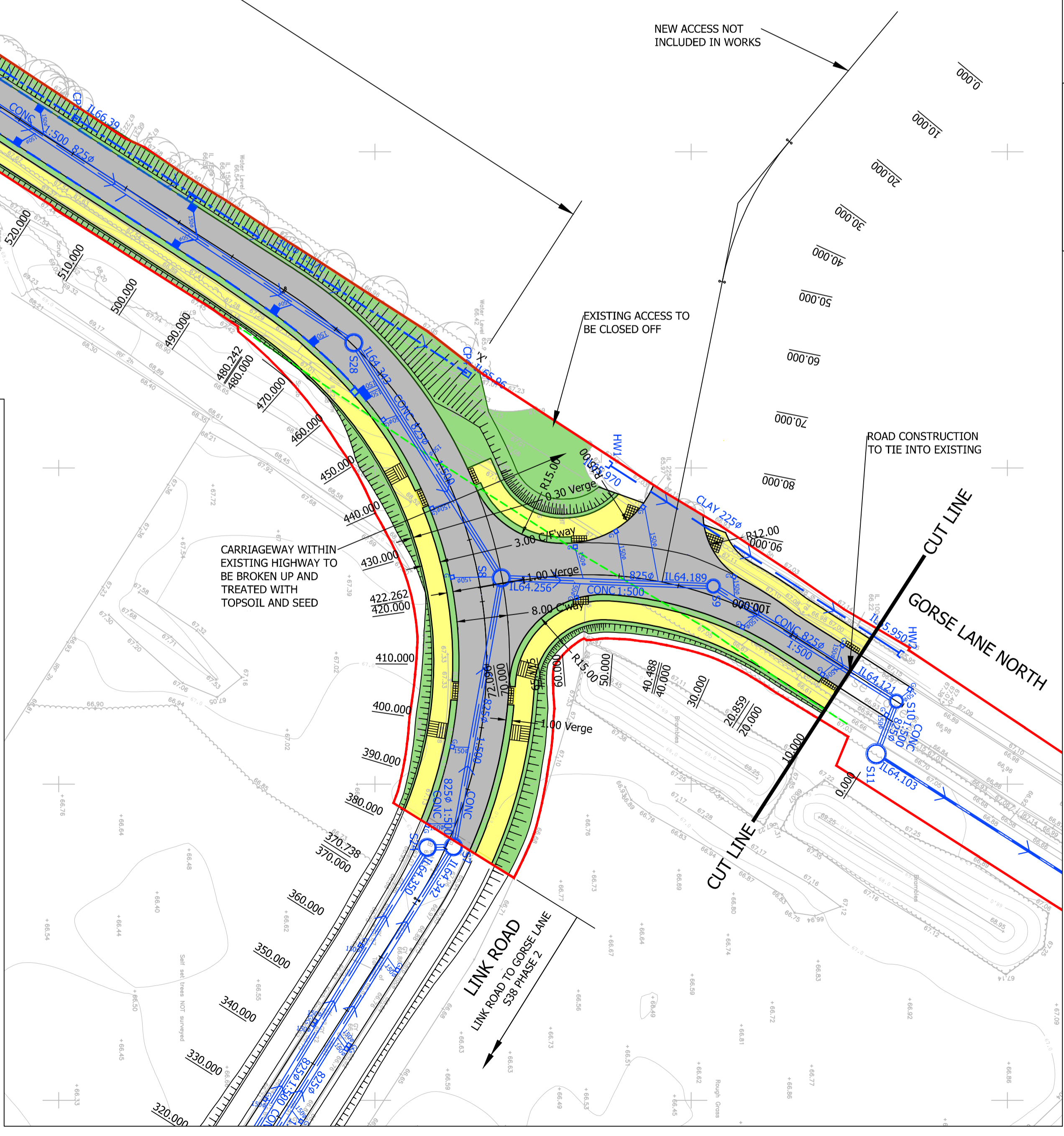
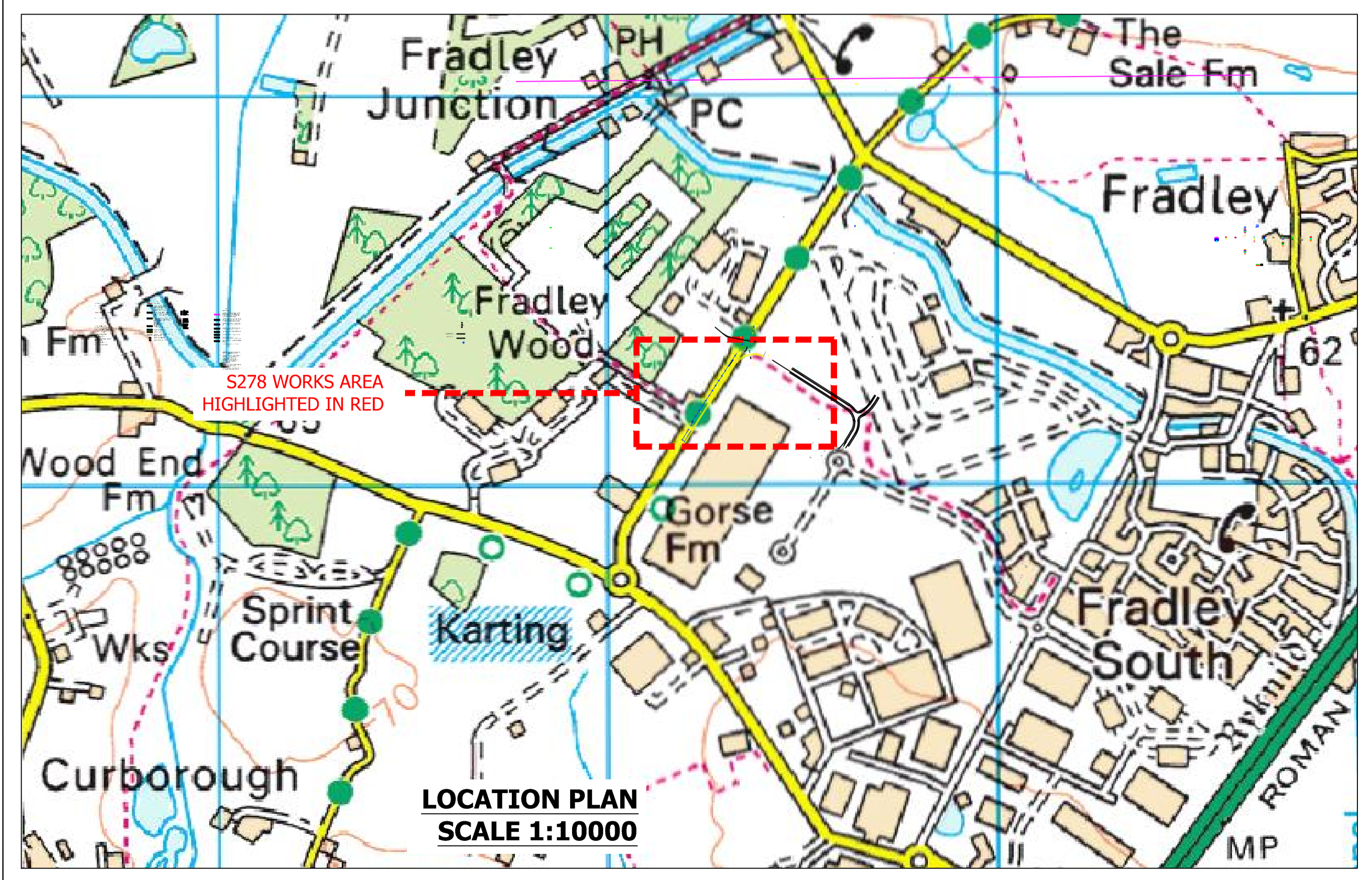
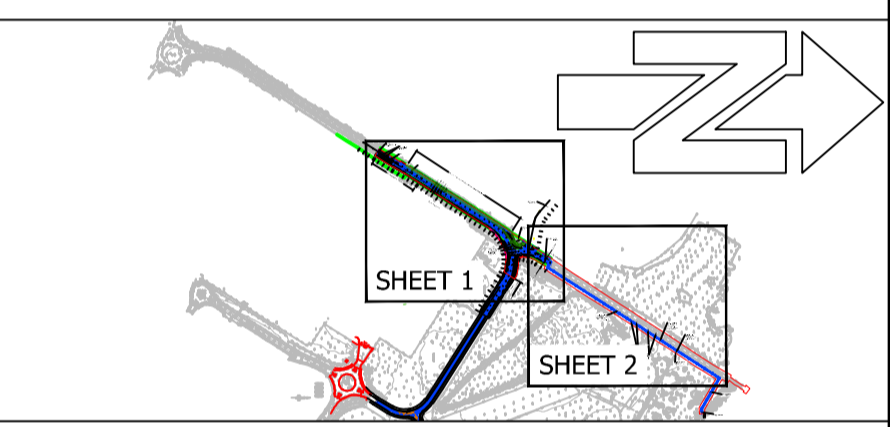
LAND WITHIN THE ENVELOPE OF VISIBILITY NEEDS TO BE FREE OF PERMANENT OBSTRUCTIONS OVER A HEIGHT OF 600mm ABOVE THE ADJACENT CARRIAGEWAY LEVEL

ADDITIONAL ON SITE INVESTIGATION REQUIRED INTO EXISTING HIGHWAY DRAINAGE AND REPORTED BACK TO ENGINEERS BEFORE REMOVAL

PLEASE REFER TO DRAWING 16067-901-2 FOR S278 GA SHEET 2 OF 2

- DO NOT SCALE FROM THIS DRAWING. IF IN DOUBT CONTACT TRAVIS BAKER LIMITED.
- ALL DIMENSIONS ARE IN METRES UNLESS OTHERWISE NOTED.
- THIS DRAWING IS TO BE READ IN CONJUNCTION WITH ALL OTHER RELEVANT DRAWINGS RELATING TO THIS PROJECT.
- ALL DIMENSIONS SHOULD BE CHECKED ON SITE PRIOR TO CONSTRUCTION. ANY DISCREPANCIES SHOULD BE IMMEDIATELY NOTIFIED IN WRITING TO TRAVIS BAKER LIMITED.
- THE CONTRACTOR SHALL PRIOR TO CONSTRUCTION CHECK AND VERIFY THAT THE DETAILS SHOWN ON THIS DRAWING ARE FULLY COMPATIBLE WITH ANY AS CONSTRUCTED DIMENSIONS OR LEVELS. ANY DISCREPANCIES TO BE REPORTED IMMEDIATELY IN WRITING TO TRAVIS BAKER LIMITED.
- THIS DRAWING HAS BEEN PREPARED FOR THE EXCLUSIVE USE OF THE COMMISSIONING PARTY AND UNLESS AGREED IN WRITING BY TRAVIS BAKER LIMITED NO OTHER PARTY MAY USE OR RELY ON ITS CONTENTS. NO LIABILITY IS ACCEPTED BY TRAVIS BAKER LIMITED FOR ANY USE OF THIS DRAWING OTHER THAN FOR THE PURPOSE FOR WHICH IT WAS ORIGINALLY PREPARED.
- IT SHOULD BE NOTED THAT THIS DRAWING MAY INCLUDE DATA PROVIDED BY THIRD PARTIES. NO LIABILITY IS ACCEPTED BY TRAVIS BAKER LIMITED AS TO THE ACCURACY OF THIS DATA.
- THIS DRAWING SHALL NOT BE REPRODUCED IN ANY WAY WITHOUT THE WRITTEN PERMISSION OF TRAVIS BAKER LIMITED.

- KEY**
- HIGHWAY BOUNDARY
 - S278 BOUNDARY
 - S278 CARRIAGEWAY CONSTRUCTION
 - S278 FOOTWAY/CYCLEWAY CONSTRUCTION
 - S278 GRASS VERGE
 - VEHICLE CROSSOVER
 - TACTILE PAVING
 - S1 00.000 PROPOSED HIGHWAY DRAINAGE S278
 - PROPOSED HIGHWAY GULLY S278
 - PROPOSED HEADWALL
 - BEANY BLOCK S278
 - BEANY BLOCK AND ACCESS COVER S278
 - 150# PROPOSED BEANY BLOCK OUTLET GULLY POT AND CONNECTION S278
 - EMBAKMENT



C	ACCESS OFF GORSE LANE RE-ALIGNED	23.07.20	BM	RA
B	REVISED FURTHER AS PER STAFFS CC COMMENTS	09.03.20	DAF	RA
A	REVISED AS PER STAFFS CC COMMENTS	27.02.20	DAF	RA
-	DRAWING RE-NUMBERED, BASED ON DRAWING 900K	14.02.20	DAF	RA

travis baker

Travis Baker
Trinity House
New Road
Halesowen
West Midlands
B63 3HY

Tel: 0121 550 8037
Fax: 0121 550 8047
info@travisbaker.co.uk
www.travisbaker.co.uk

CLIENT
BELLWAY HOMES WEST MIDLANDS

PROJECT
FRADLEY PARK, LICHFIELD

TITLE
S278 LINK ROAD TO GORSE LANE GENERAL ARRANGEMENT 1 OF 2

DRAWN	AUTHORISED	SCALE	DATE
DAF	RA	1:500@A1 1:1000@A3	14.02.20

PROJECT NO.	DRAWING NO.	REV
16067	S278-901-1	C

STATUS: **FOR APPROVAL**

COPYRIGHT TRAVIS BAKER LIMITED. ALL RIGHTS RESERVED.